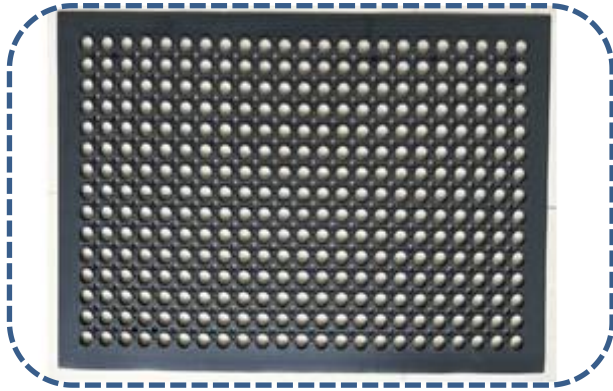


Qingdao Kingstone Industry Co.,Ltd

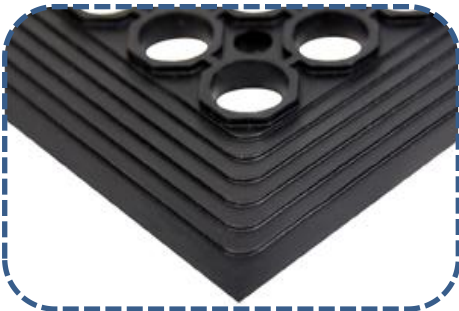
◎Product Description

- **Name:** rubber scraper mat with holes
- **Model Nr.:** KM102/KM101
- **Material :** rubber
- **Color:** black, red, green.
- **Size:** 36" x 60" ,36" x 24 "
- **Thickness:** 1/2in
- **Weight:** 7.8kg/3.5kg
- **Function:** anti slip ,drainage,dirt trap
- **Application:** kitchen, outdoor entrance, wet area, work area ,etc

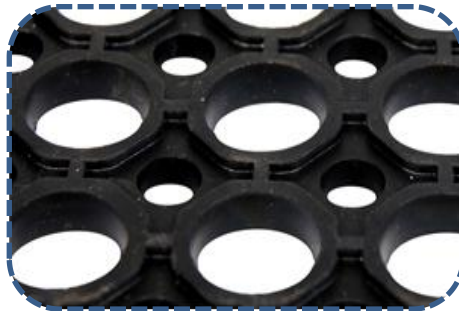


Beveled edges	Surface	Backing	Packaging	Application
easy transition to the mat	perforated holes	grips&tractions protruding for drainage	pallet, carton, iron cage	kitchen, entrance, wet areas

◎Beveled edges



◎Surface



◎Backing



◎Application



*Beveled edges guarantee safe access from ground to mat.

*Large holes to leak water and dirt.

*Protruding back to let water flow away.

*Its backing provides grips and tractions for keeping the mat in place.